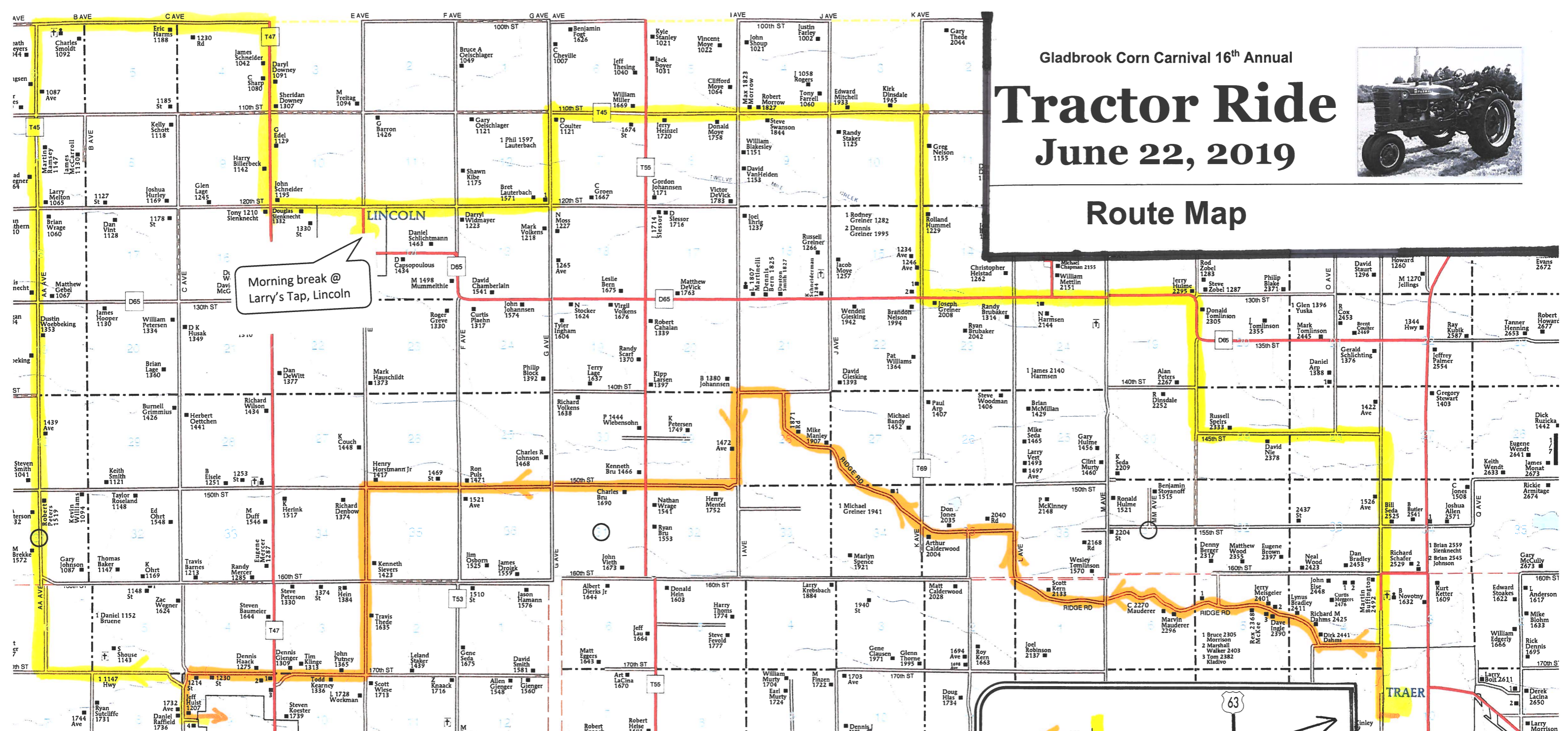


Gladbrook Corn Carnival 16<sup>th</sup> Annual

# Tractor Ride June 22, 2019



## Route Map

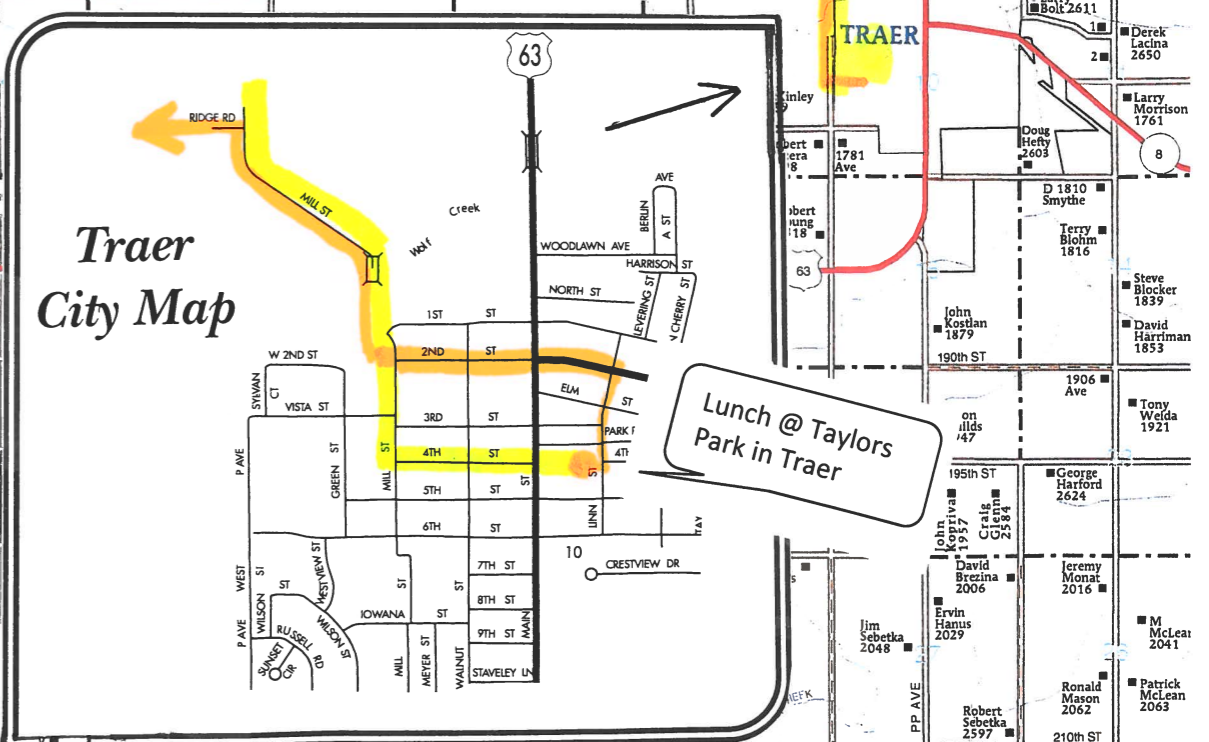


Morning break @  
Larry's Tap, Lincoln

**Thank you for participating in our 2019 Tractor Ride!!**

- \* Start on Johnston St, Gladbrook, head west out of town toward Tama Co Fairgrounds taking C Ave north to 170<sup>th</sup> St West
- Turn north on AA Ave traveling for 7 miles to 100<sup>th</sup> St (15 mi cemetery), then head back east 2.5 miles to T47 turning south.
- Travel 2 miles south on T47; at 120<sup>th</sup> St turn east traveling one mile to E Ave, then turn south again into Lincoln.
- Turn down main street Lincoln west; morning break & coffee at Larry's Tap in Lincoln. *Please limit break to half hour.*
- Leave Lincoln same way we came in back north to 120<sup>th</sup> St for 2 mi.; turn north on G Ave for 1 mi; turn west on 110<sup>th</sup> St
- Travel 4 mi east on 110<sup>th</sup> St to K Ave; turn south for 2 mi to D65. At D65, turn west following blacktop for 3 1/2 mi.
- Where D65 curves back east, continue south on N Ave for 1 mi turning back east on 145<sup>th</sup> St. Travel east for 2 mi to P Ave.
- Take P Ave south into the west side of Traer to Mill St then to 4<sup>th</sup> St to cross Hwy 63 in to Taylors Park for lunch.
- Leave Taylors Park by Linn St to Hwy 8 turning west down 2<sup>nd</sup> St (main business street) to Mill St heading north.
- Head north out of Traer until turning west at Ridge Road. Follow Ridge Road about 8 miles to I Ave.
- Turn south on I Ave for 1 mi to 150<sup>th</sup> St. Turn west for 4 mi. At E Ave, turn south for 2 mi.; At 170<sup>th</sup> St, turn west for 2 mi, then S
- Picture pickup after ride @ Tama Co Fairgrounds area where you left your trailers. *Hope to see you again in 2020!*

## Traer City Map



Lunch @ Taylors  
Park in Traer